

USA SAFETY TRAINING

EQUIPMENT SAFE OPERATOR TRAINING

TRAINER

TRAINER PHONE

TRAINER EMAIL

Trench Training

- Trench Competent Person
- Confined Spaces

Other Courses

- Skid Steer
- Mini Excavator
- Fall Protection
- Bucket Truck
- Silica Dust
- Utility Vehicle (UTV)
- OSHA 10 and 30
- Various Other Offerings



**SCAN
HERE**
TO SIGN
UP TODAY

Mobile Elevated Work Platform (MEWP)

In Our Courses We Review

- Equipment Related Topics
- Fall Protection (Aerial Lifts Only)
- Responsibilities
- Safe Operation
- Inspections
- Function Tests
- Workplace Related Topics
- Requirements of the Relevant OSHA and ANSI Standards

Covered (MEWP) Standards:

- ANSI/SAIA A92.22 and A92.24
- OSHA 1926.453

Training Offered:

- Operator
- Train-the-Trainer

Delivery Methods:

- In-Person Instructor Led
- Virtual Instructor Led
- Computer Based

Forklift Course

In Our Courses We Review

- Equipment Related Topics
- Operating Instructions and Precautions
- Differences from Automobile
- Controls and Instrumentation
- Visibility
- Equipment Capacity and Stability
- Load Charts (Reach Forklifts)
- Operating Limitations
- Workplace Related Topics
- Surface Conditions
- Pedestrian Traffic
- Overhead Obstructions and High Voltage Conductors
- Operating on Ramps and Sloped Surfaces

Covered Powered Industrial Truck Standards:

- OSHA 1910.178 and 1926.602

Training Offered:

- Operator
- Train-the-Trainer

Courses/Classifications:

- (Class 1,4,5) Electric and/or Internal Combustion Engine Sit Down Forklift
- (Class 2) Stand Up Narrow Aisle Forklift
- (Class 3) Electric Pallet Jack
- (Class 6) Ground Support Equipment
- (Class 7) Rough Terrain Forklift

Delivery Methods:

- In-Person Instructor Led
- Virtual Instructor Led
- Computer Based (Certain Classifications)

EQUIPMENT SAFE OPERATOR TRAINING

Mobile Elevated Work Platforms (MEWP)

as required by ANSI/SAIA, OSHA, and CSA

- Mobile Elevating Work Platforms
- Operator Certification
- Supervisor Certification
- 1A, 1B, 3A, 3B
- ANSI A92, OSHA 1926.453, and CSA B354
- In-Person, Virtual, or Computer Based Training
- Train-the-Trainer Available



- Mobile Elevating Work Platforms
- Operator Certification
- Supervisor Certification
- Bucket Truck (1B)
- ANSI A92
- In-Person or Virtual Training



Powered Industrial Trucks (Forklifts)

as required by OSHA, ANSI, and CSA

- Rough Terrain Forklifts
- Class 7 Powered Industrial Truck
- Telehandler or Straight Mast
- OSHA 1910.178, 1926.602, ANSI B56.6, and CSA B335
- In-Person, Virtual, or Computer Based Training
- Train-the-Trainer Available



- Warehouse Forklifts
- Class 1, 4, 5 Powered Industrial Trucks
- Electric or Internal Combustion Engine
- OSHA 1910.178, ANSI B56.1, and CSA B335
- In-Person or Virtual Training
- Train-the-Trainer Available



- Narrow Aisle Forklifts
- Electric Pallet Jacks
- Class 2 and 3 Powered Industrial Trucks
- OSHA 1910.178, ANSI B56.1, and CSAB335
- In-Person or Virtual Training
- Train-the-Trainer Available



- Ground Support Equipment (GSE)
- Class 6 Powered Industrial Truck
- Various Styles of GSE
- OSHA 1910.178, ANSI B56.9, and CSA B335
- In-Person or Virtual Training



Earthmoving Equipment

as required by OSHA

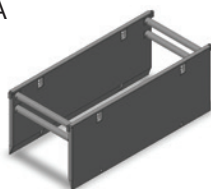
- Skid Steer
- Wheel Loader
- Mini Excavator
- Operator Training
- Covers OSHA 1926.602
- In-Person or Virtual Training
- Train-the-Trainer Available



Trench Training

as required by OSHA

- Trench Competent Person
- Confined Spaces



FALL PROTECTION

- Working at Heights (Ontario)
- Fall Protection (OSSA/Energy Safety Canada)

U.S. / Canada Classes: 1-888-658-5537

herccustequipsafetytrain@hercrentals.com

canadaproductsafetytraining@hercrentals.com

HercRentals[®]